

# Smoke Alarms

WHITSUNDAYS

"Our focus is your safety"



Ensuring protection throughout Rural Regions communities.

## Qualified, Experienced... Local!

Smoke Alarms Whitsundays is a locally owned company ensuring protection throughout the Whitsundays community.

With fully qualified electricians and years of experience, we can ensure your investment property and tenants are safe and protected – hassle free!

Our smoke alarm servicing includes:

- Test & clean all smoke alarms.
- Ensure all smoke alarms comply with QLD legislation.
- Replace eligible faulty smoke alarms under warranty.
- Smoke alarm expiry reminder.
- Compliance certificate/report issued.
- All completed by a qualified electrician.



### FREE CHANGE OVER POLICY

To ensure there are no additional costs to your landlords, Smoke Alarms Whitsundays will honour any existing contract with another smoke alarm compliance provider.

Contact us for more details.



SERVICES

## DIAMOND COVER

12 MONTH SUBSCRIPTION

Brooks & Clipsal Smoke Alarms

\$189.00

+ Optional Safety Switch Test \$10.00

Carry out unlimited servicing and compliance inspections to ensure all smoke alarms meet current legislation PLUS unlimited service call-outs for beeping or faulty smoke alarms.

\* Conditions Apply.

## SAPPHIRE COVER

12 MONTH SUBSCRIPTION

Emerald, RED, PSA Lifesaver, Voltex,

MatElec, Trader & Cavius Alarms

\$189.00

+ Optional Safety Switch Test \$10.00

Carry out unlimited servicing and compliance inspections to ensure smoke alarms meet current legislation PLUS 4 service call-outs included for false activation and faulty alarm call-outs.

\* After 4th free visit, \$189 fee per visit for false activation/faulty alarms  
Free quotation to upgrade will be provided.

\* Conditions Apply.

## RUBY COVER

12 MONTH SUBSCRIPTION

ALL OTHER Smoke Alarm Brands

\$189.00

+ Optional Safety Switch Test \$10.00

Carry out unlimited compliance inspections to ensure smoke alarms meet current legislation. NO service call-outs included for beeping or faulty smoke alarms.

\* \$189 per visit for false activation/faulty alarms.  
Free quotation to upgrade will be provided.

\* Conditions Apply.

# Important Legislation

## CURRENT LEGISLATION FROM 1 JANUARY 2017

Existing smoke alarms manufactured more than 10 years ago, as well as any smoke alarms that do not operate when tested, must be replaced with photoelectric smoke alarms that comply with Australian Standards 3786-2014.

Within 30 days each smoke alarm must be tested and cleaned by the lessor/landlord prior to the start of a tenancy agreement, or renewal of lease agreement. Batteries in each smoke alarm must also be replaced in accordance with the manufacturer's instructions, if flat or that you or your agent is aware is almost flat within 30 days before the start of tenancy.

## CURRENT LEGISLATION FROM 1ST OF JANUARY 2022

All smoke alarms must be interconnected, powered by 240 volt (hardwired) or non-removable 10-year battery and must be photoelectric (AS3786-2014).

### Smoke Alarms in the dwelling must:

- Be photoelectric (AS 3786-2014); and
- Not also contain an ionization sensor; and
- Be less than 10 years old; and
- Operate when tested; and
- Be interconnected with every other smoke alarm in the dwelling so all activate together

Where practicable smoke alarms must be placed on the ceiling.

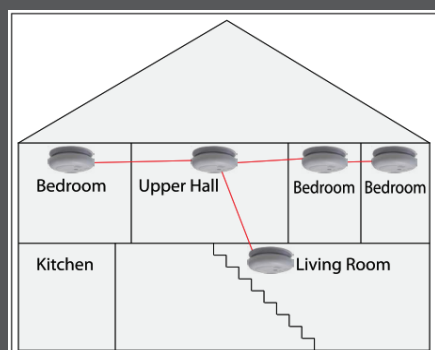
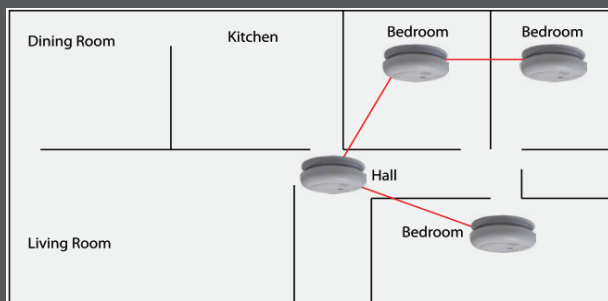
Smoke alarms must not be placed:

- i) within 300mm of a corner of a ceiling and a wall;
- ii) within 300mm of a light fitting;
- iii) within 400mm of an air-conditioning vent; or
- iv) within 400mm of the blades of a ceiling fan.

If a smoke alarm which is hardwired to the domestic power supply needs replacement, it must be replaced with a hardwired photoelectric smoke alarm.

Smoke alarms must be installed on each storey:

- In each bedroom; and
- In hallways which connect bedrooms and rest of the dwellings; or
- If there is no hallway, between the bedrooms and other parts of the storey; and
- If there are no bedrooms on a story, at least one smoke alarm must be installed in the most likely path of travel to the exit of the dwelling.



# Smoke Alarms Save Lives

- It's not a choice, it's the law.
- Landlords have a duty of care to ensure the safety of their tenants.
- Failure to ensure the safety of your tenants or property can result in the dismissal of an insurance claim, damages, injury or worse - death.

## Make your investment safe and compliant today

### About our suppliers...

Brooks Australia is a family owned and operated company that for 50 years has been protecting Australian families and property. Over that time they have developed and supplied an array of high quality, reliable products based on their knowledge and experience to help safeguard you and your family.

Brooks smoke alarms have been specifically designed to withstand the tropical climate that Whitsundays can experience which leads to far less false activation rates.



**Brooks BROEIB3016 hardwired & Brooks BROEI650IRF 10yr non-removable lithium battery operated smoke alarms**

Normally \$229.00 ea

**NOW \$199.00 ea**

**Supplied and Installed**

\* RF Module for Hybrid installation additional \$140.00 per module.  
\* Free quotations available.



**SmokeAlarms**  
WHITSUNDAYS

*'Our focus is your safety'*

**(07) 4946 4646**

Smoke Alarms Whitsundays Pty Ltd  
admin@smokealarmswhitsundays.com.au  
ABN: 66 695 837 971